

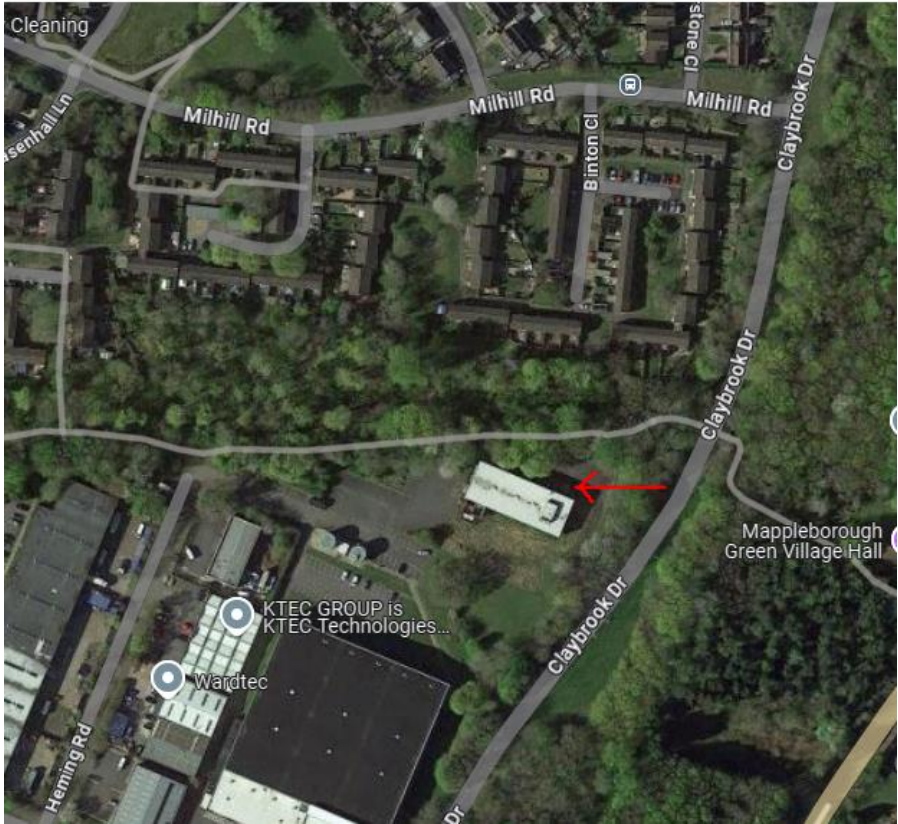
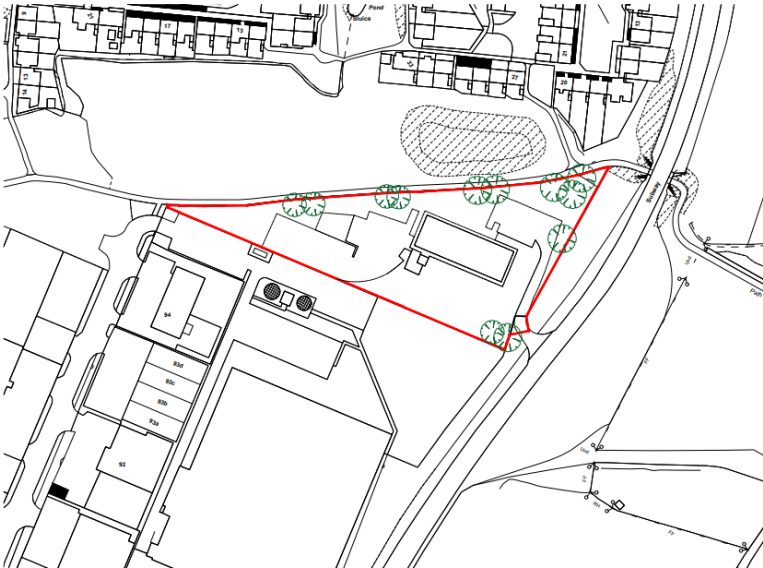
24/00639/FUL

Claybrook House, Claybrook Drive,
Matchborough East, Redditch, B98 0FH

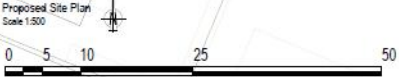
Erection of 13 Class E Business Units with
associated parking

Recommendation: Grant subject to conditions

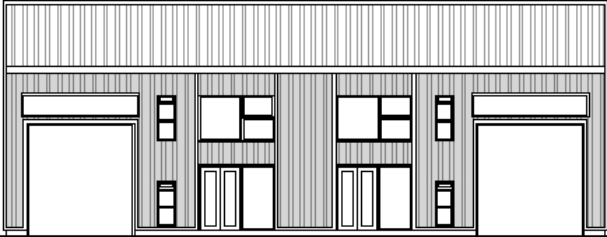
Site Location



Proposed Site Plan



Proposed elevations (1)



Unit 4

Unit 3

Proposed South East Elevation

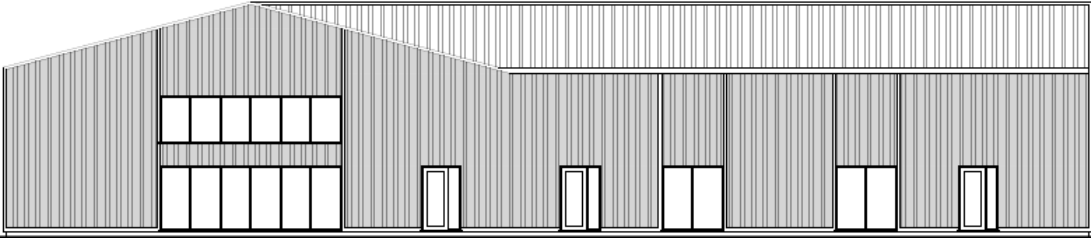


Unit 1

Unit 2

Unit 4

Proposed North West Elevation

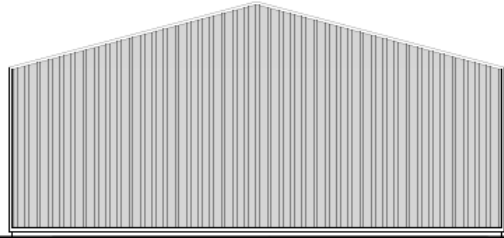


Unit 3

Unit 2

Unit 1

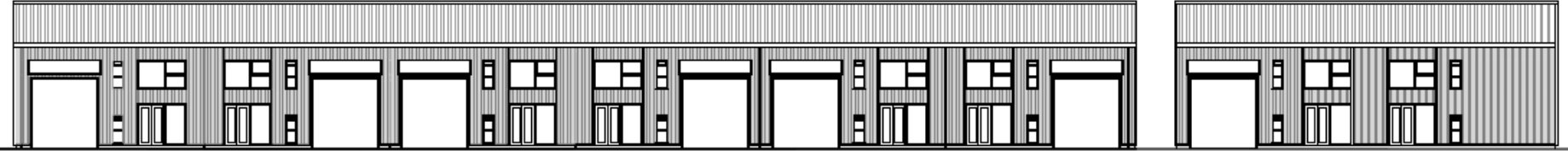
Proposed South East Elevation



Unit 1

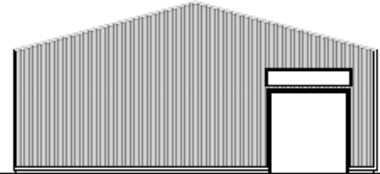
Proposed North East Elevation

Proposed elevations (2)



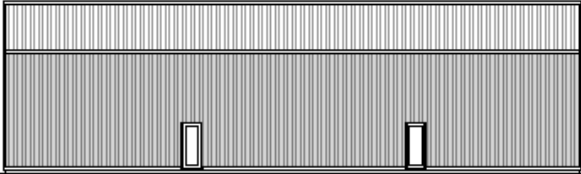
Proposed South Elevation

Proposed South West Elevation



Unit 5

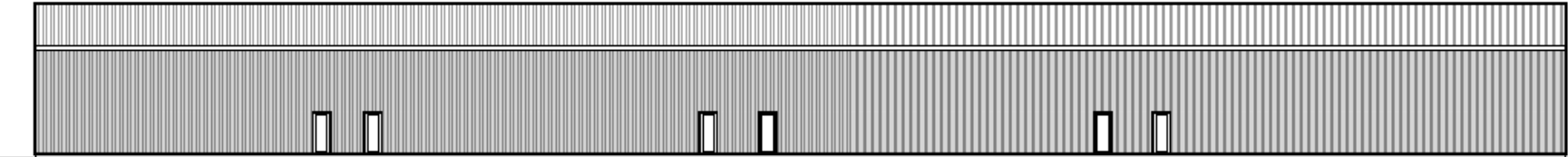
Proposed South East Elevation



Unit 5

Unit 6

Proposed North East Elevation



Unit 7

Unit 8

Unit 9

Unit 10

Unit 11

Unit 12

Unit 13

Proposed North Elevation

Existing (and proposed) access from Claybrook Drive



Site Prior to demolition of existing building



Inside site from Claybrook Drive



From footpath



Secondary vehicular access from Heming Rd serving Unit 13

